

1. Answer the following questions.

i. Name the four basic parts of a plant cell.

Ans:

ii. Which part of plant cell controls its activities?

Ans:

iii. What is the function of cell wall?

Ans:

iv. Are plant cells flexible?

Ans:

v. Which organelle of a plant cell performs photosynthesis?

Ans:

vi. Name the power house of a plant cell?

Ans:

vii. Do plant cells have centrioles?

Ans:

viii. Name the network of channels in plant cell?

Ans:

ix. Name five organelles of a plant cell.

Ans:

x. How many vacuoles do plant cells have?

Ans:

2. Tick the right option.

1. All plants are made up of:

- I. Bricks II. Atoms III. Cells IV. None of these

2. Which organelle produce energy in plant cell?

- I. Mitochondria II. Nucleus III. Ribosomes IV. Lysosomes

3. Ribosomes produce _____ in the cell.

- I. Fats II. Protein III. Nitrogen IV. Oxygen

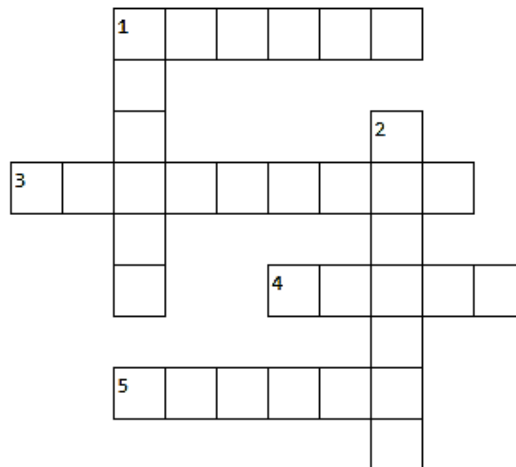
4. Stomata are involved in:

- I. Photosynthesis II. Respiration III. Gaseous exchange IV. Transport of water

5. _____ cells help in transport of water.

- I. Xylem II. Phloem III. Mesophyll cells IV. Root hair cells

3. Crosswords



Across

1. Photosynthesis occurs in:
3. Plants are also called as:
4. Cells are _____ units of plants.
5. _____ is produced by plants.

Down

1. They transport food.
2. Cell wall is _____ in plant cells.

4. Words Search

Find the following word in the words search.

Mitochondria	Xylem	Chloroplast	Nucleus	Cytoplasm
--------------	-------	-------------	---------	-----------

O	C	Y	T	P	L	A	S	M	Q	I	D	C
Y	U	N	V	G	D	J	J	X	J	U	B	T
D	M	I	T	O	C	H	O	N	D	R	I	A
L	Y	M	H	O	P	I	S	M	X	H	M	S
C	H	L	O	R	O	P	L	A	S	T	K	X
J	W	X	A	N	T	U	B	O	F	U	E	Y
G	O	Y	P	D	J	C	D	R	H	I	U	L
W	P	N	R		C	C	S	H	I	M	H	E
J	V	G	N	U	C	L	E	U	S	P	F	M

5. Jumbled Words

- | | |
|-----------------------|----------------------|
| i. TOMASTA _____ | ii. MELYX _____ |
| iii. EMOLPH _____ | iv. STISEUS _____ |
| v. LYLHSPEOM _____ | vi. FEAL _____ |
| vii. SOLERTINEC _____ | viii. SMALPTYC _____ |
| ix. LOCUAEV _____ | x. SUELCUN _____ |

6. Columns

Match the column A with column B.

Column A

PLANT CELLS •

ONE LARGE •

NUCLEUS •

STOMATA •

CYTOPLASM •

Column B

• BRAIN OF CELL

• HAVE CELL WALLS

• JELLY LIKE SUBSTANCE

• VACUOLE

• GUARD CELLS

7. Fill in the blanks using the given words.

different	nucleus	Plants	vacuoles	water
-----------	---------	--------	----------	-------

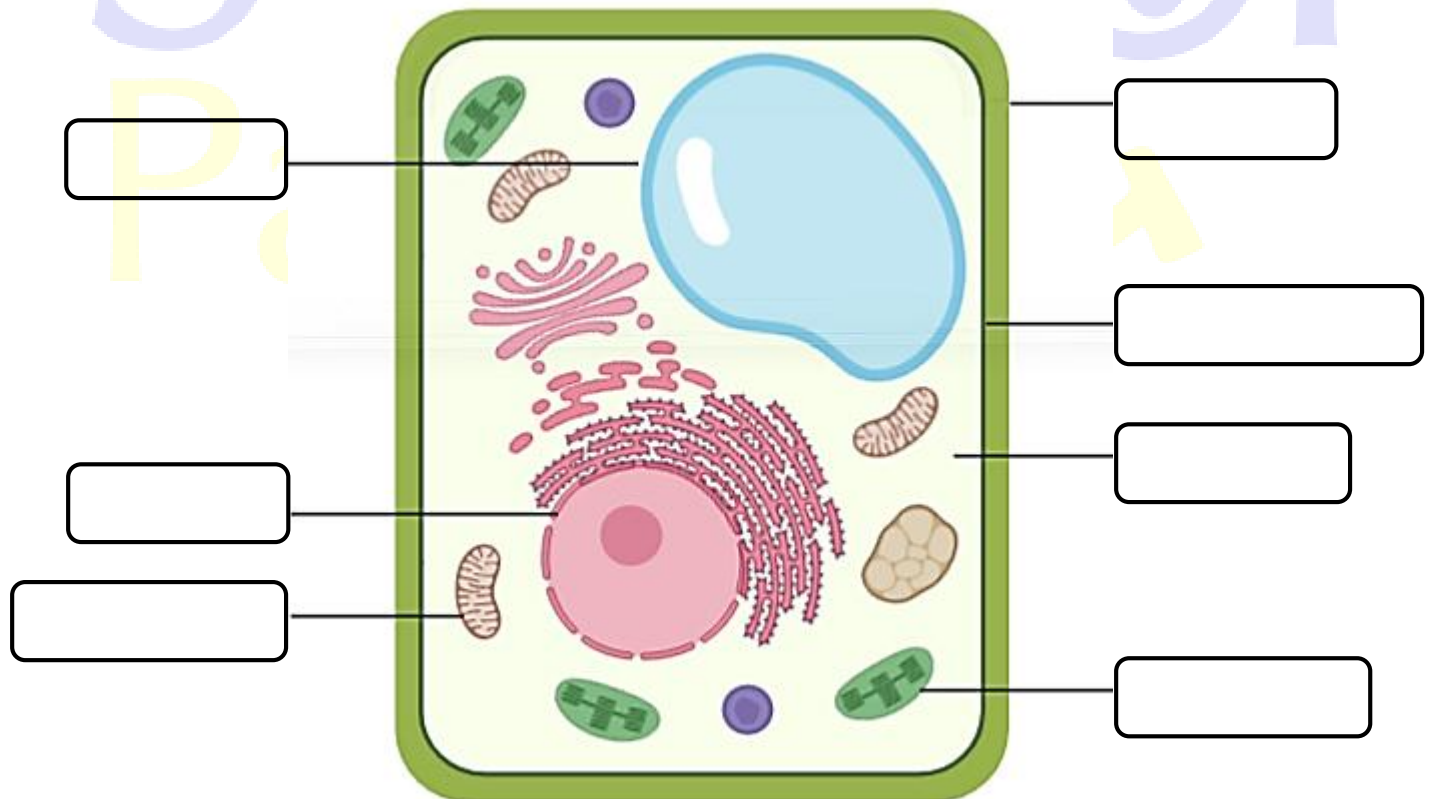
- i. _____ are living things made up of cells.
- ii. Root hair cells help in absorption of _____ from soil.
- iii. Plant and animal cells are _____.
- iv. DNA is present in the _____ of cell.
- v. _____ store waste materials.

8. Write “T” for the true and “F” for the false statement.

- i. Cells combine to form tissues.
- ii. Plants exchange gases through root hair cells.
- iii. Plant cells are specialized for their job.
- iv. Cell contains organelles.
- v. Energy is produced in chloroplast of cells.



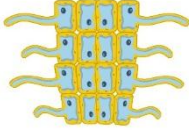
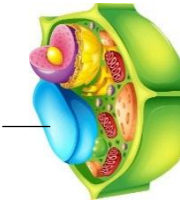

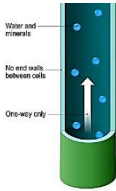


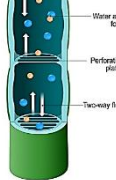
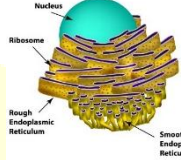
9. Label the diagram.

A Plant Cell



10. Drag and Drop

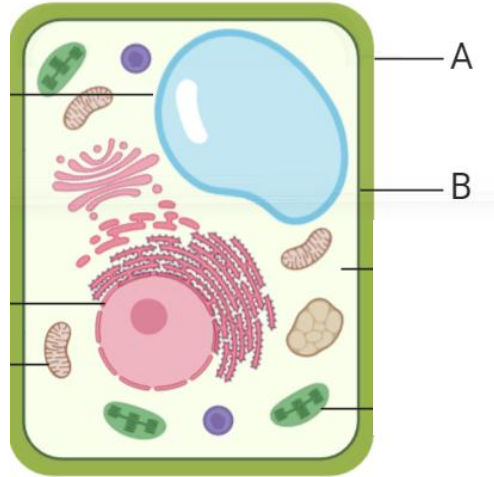
Look at the pictures and write their names in the relevant column.

				
Palisade	Chloroplast	Root hair cells	Vacuole	Stomata
				
Xylem	Mitochondria	Nucleus	Phloem	Endoplasmic reticulum

Specialized cells

Organelles

11. Comprehension



'A' is a unique feature structure seen in plant cells. While the 'B' acts as the outer layer in an animal cell. 'A' is an extra layer mainly made up of cellulose.

i. Name the structure A also give its function.

Ans:.....

ii. Name the structure B also give its function.

Ans:.....

iii. What is composition of 'A'?

Ans:.....