

1. Answer the following questions.

1. Define air pollution.

Ans:.....

.....

2. Define biodegradable material?

Ans:.....

.....

3. Which disease are caused by drinking contaminated/ polluted water?

Ans:.....

.....

4. Define the term environment.

Ans:.....

.....

5. Define the term pollution.

Ans:.....

.....

2. Tick the right option.

1. Which of the following is biodegradable?

- (a) a plastic bottle (b) a pen (c) a potato peel (d) an elastic band

2. What does it mean if something is non-biodegradable?

- (a) it will decompose (b) it will not decompose (c) it is good for the environment (d) it will not cause pollution

3. Which of the following causes air pollution?

- (a) burning coal (b) smoke (c) exhaust fumes (d) all of them

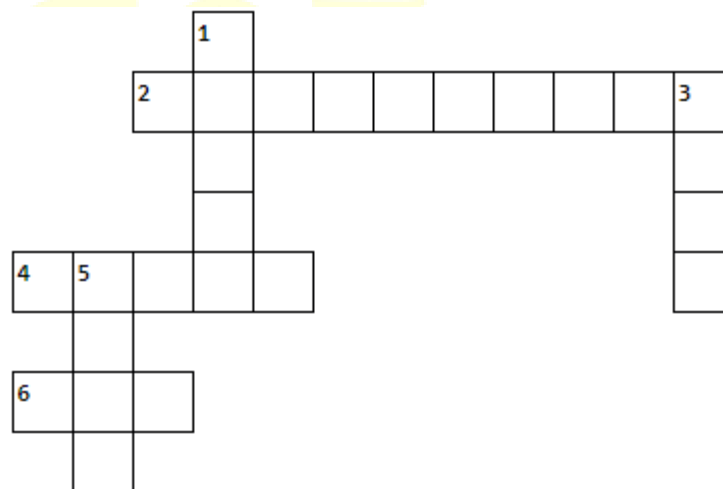
4. Which of the following causes water pollution?

- (a) burning fossil fuels (b) throwing rubbish in water (c) using toxic chemicals on plants (d) all of the above

5. Which of the following is not one of the three Rs?

- (a) reduce (b) reap (c) recycle (d) reuse

3. Crosswords



Across

2. They causes pollution
 4. _____ is a universal solvent
 6. _____ is a mixture of gases.

Down

1. It causes sleeping disorders.
 3. It causes difficulty in vision.
 5. _____rain can damage buildings

4. Words Search

Find the following word in the words search.

Atmosphere	Hydrocarbon	Methane	Sulphur	Poisonous
------------	-------------	---------	---------	-----------

H	Y	D	R	O	C	A	R	B	O	N
W	A	G	H	S	T	N	J	K	S	L
O	T	E	T	S	U	L	P	H	U	R
D	M	H	T	X	E	A	O	F	S	M
U	O	B	S	K	T	Q	I	E	D	N
S	S	Q	L	H	H	W	S	Q	J	I
Z	P	S	K	G	J	S	O	R	I	T
I	H	F	I	F	N	H	N	Y	M	Y
M	E	T	H	A	N	E	O	I	K	C
C	R	G	W	Q	K	J	U	U	Y	S
A	E	N	B	D	M	K	S	K	G	A

5. Jumbled Words

- | | |
|--|--|
| i. mentenviron _____

ii. llopution _____

iii. forestdeation _____

iv. degradbioable _____

v. hougrseen _____ | i. Cemichal _____

ii. Hericibed _____

iii. Diahrrea _____

iv. Ptollusant _____

v. Fosetr _____ |
|--|--|

6. Columns

Match the column A with column B.

Column A

- Carbon dioxide and methane
- Reduces visibility
- Coal, petrol and diesel
- Related to water
- Plastic and metal cans

Column B

- Smog
- Fossil fuels
- Aquatic
- Non-biodegradable
- Greenhouse gases

7. Fill in the blanks using the given words.

Recycle	asthma	ultraviolet	essential	land
---------	--------	-------------	-----------	------

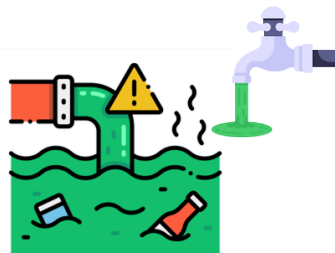
- i. The waste material causes _____ pollution.
- ii. Polluted air may cause disease like _____.
- iii. Water is _____ for all living things.
- iv. _____ means using old items to make something new.
- v. Ozone layer protects us from _____ radiations.

8. Write “T” for the true and “F” for the false statement.

- i. Material which decompose naturally are known as biodegradable.
- ii. Oil-spills and leaks in the ocean cause air pollution.
- iii. Glass and metal are two examples of biodegradable materials.
- iv. Land pollution does not have any effect on plant and animal life.
- v. The ozone layer of the atmosphere protects the earth from the harmful rays of the sun.
- vi. Half of the earth is covered by water.
- vii. Water pollution may cause infectious diseases like cholera and typhoid
- viii. Paper is an example of non-biodegradable material.
- ix. Gold is an example of biodegradable material.
- x. Some natural disasters, like floods and landslides, are a result of environmental pollution.





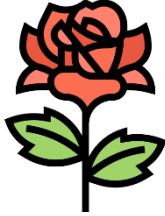





9. Label the diagram.

Pollution



10. Drag and Drop

Look at the pictures and write their names in the relevant column.

				
Marbles	Milk bottle	Carrot	Rat	Flower
				
Peel of banana	Glasses	Plastic ball	Plastic chappal	Leaves

Biodegradable

Non-biodegradable

11. Comprehension

Pollution is a problem that affects many plants and animals. Pollution is harmful for plants or poisonous to plants and animals.

Pollution can occur naturally or be man-made. Natural pollution includes sandstorms, volcanic eruptions and wildfires. Man-made pollution, such as from factories, cars and sewage is caused by people.

There are three basic types of pollution. Pollution can affect water, air and land so these are water pollution, air pollution and land pollution.

i. Which organisms are affected by pollution?

Ans:.....
.....

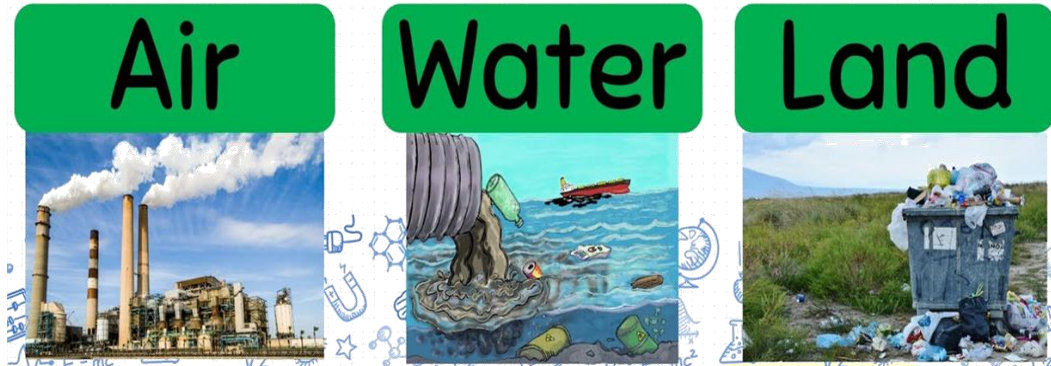
ii. How pollution can occur?

Ans:.....
.....

iii. What are the three basic types of pollution?

Ans:.....
.....
.....
.....

12. Complete the following table.



Types of pollution	Causes	Effects	Ways to reduce
Land			
Air			
Water			

13. Answer the following question in detail.

Explain 3R strategy to reduce pollution due to non-biodegradable materials.

Ans:.....

.....

.....

.....

.....

.....

.....

.....

.....

.....

.....

.....

.....

.....

.....

.....

.....

.....